

IMMACUTRAK FOOD CONVEYOR SYSTEMS



The Hendrik Group, Inc.
193 Sprain Brook Road
Woodbury, CT 06798 U.S.A.
1-203-263-7025
1-203-263-7425 fax
www.thehendrikgroup.com



The Hendrik Group

Reference: **The Hendrik Group Immacutrak™** Sanitary Conveyor Line

Thank you in advance for taking a few minutes out of your busy schedule to review the enclosed literature. We would not consider interrupting this schedule unless we thought it was important to share with you the unique sanitary design concepts of our **Immacutrak™** conveyor line.

Based upon thirty years of experience in food grade design and fabrication, **Immacutrak™** conveyors have proven themselves over and over again in plants all over North America and Europe. Our conveyors are in service in Portland, OR, Atlanta, GA, Richmond, VA, Chicago, IL, Fairlawn, NJ and numerous other locations. Purchasing Departments find us competitive, plant engineers respect us for our “eye to detail” and maintenance people love us since all parts are readily accessible and breakdowns rarely occur.

We trust you will find the enclosed interesting and informative and provide you with an incentive to add us to your preferred suppliers list and/or send us your immediate requirements. Please remember...”the bitterness of poor **quality** remains long after the sweetness of low price is forgotten”.

Sincerely,

The Hendrik Group

P.S. For more information, please visit our website...www.thehendrikgroup.com.

Redefining the Standards of Bulk Handling!

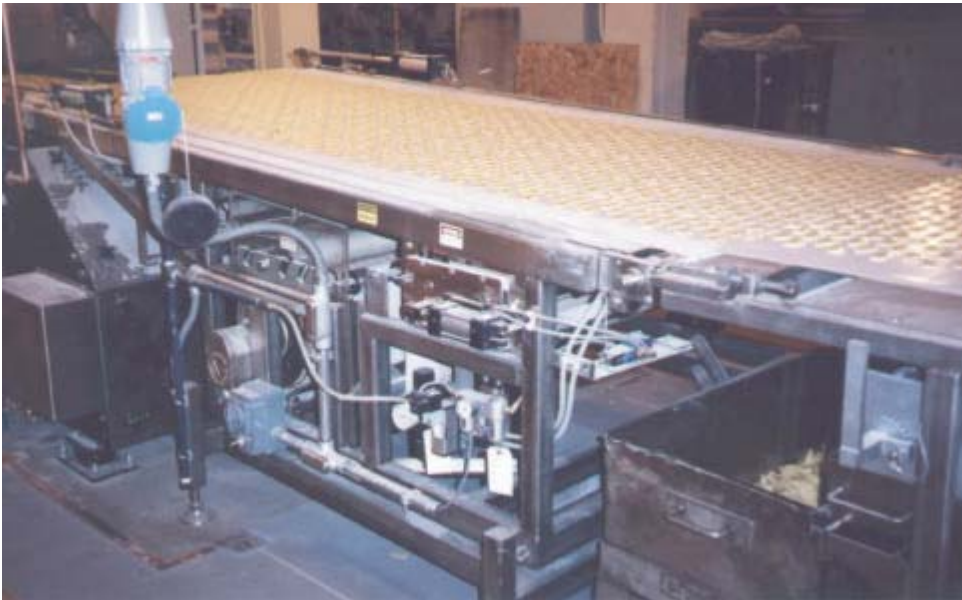
193 Sprain Brook Road
Woodbury, CT 06798 USA
203-263-7025 Fax: 203-263-7425
Email: support@thehendrikgroup.com

227 Hamburg Turnpike
Pompton Lakes, N.J. 07442 USA
973-616-9060 Fax: 973-616-9250
Email: support@thehendrikgroup.com

The Hendrik Group's Immacutrak™ family of custom, sanitary conveyors are cleaning up the food grade industry.

Thirty years of experience in food grade design and fabrication enables The Hendrik Group to offer clients the service of engineering and fabrication a full line of custom, sanitary conveyors and related equipment.

Proven principles and tested technology are applied to solve unique problems resulting in custom designed solutions.



Through detailed calculations, meticulous fabrication and thorough end-to-end management, The Hendrik Group has brought an evolutionary design to the food / chemical / pharmaceutical industries.

Immacutrak™ standards include:

- CAD generated engineering drawings
- Heavy gauge, built to last construction
- Powder coated paint system
- Shop assembly and tested prior to shipment
- On time delivery
- Impeccable follow-up
- Designed with maintenance in mind

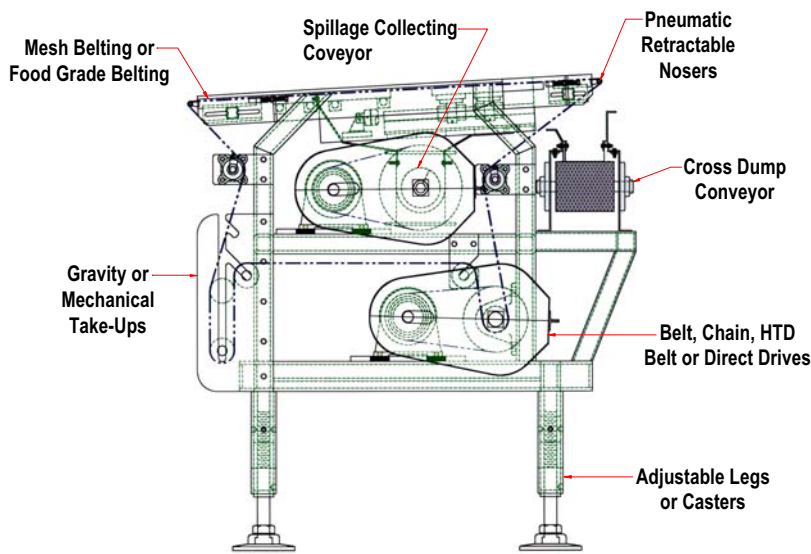
IMMACUTRAK FOOD CONVEYOR SYSTEMS

Reinventing Bulk Handling...by Design

The Hendrik Group

Industry pioneer who is proud to offer the following food grade conveyors:

- Oven Feed
- Oven Take-Off
- Oil & Salt Collecting
- Ambient Cooling
- In-plant transfer
- 90 & 180 degree Turns
- Dough Feed
- Cross Collection
- "S" & "C" Type
- Lift
- Flavor Drums
- Specialty Equipment

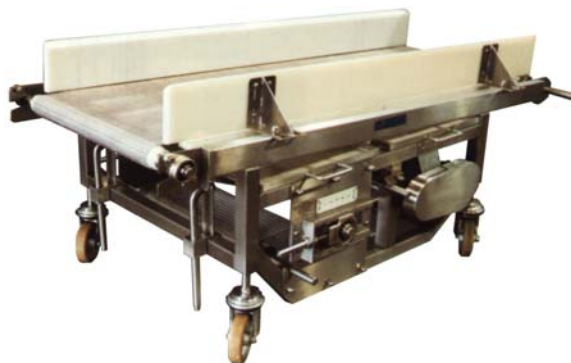


Immacutrak™ Standard and Optional Features:

- Belt widths from 12" to 72"
- Wire mesh, woven plastics or fabric belting
- Large diameter drive pulleys for guaranteed traction
- Washdown motors
- Motorized drive pulleys
- Counterweighted, mechanical or pneumatic belt take-ups
- Belt washers for sticky materials
- Pneumatic retractable infeeds and discharges
- Manual or linear actuator top deck articulation
- Built in +/-3" manual height adjustment in support frame
- 304 or 316 stainless steel construction
- Constant or variable frequency adjustable speed drives
- Management of assembly and installation

Industries Served:

- ★ Food
- ★ Bakeries
- ★ Brewing
- ★ Chemical
- ★ Pharmaceutical



At The Hendrik Group, design isn't tacked on, it's built in!
Join the Hendrik evolution!



The Hendrik Group

193 Sprain Brook Road
Woodbury, CT 06798 USA
203-263-7025 fax: 203-263-7425

227 Hamburg Turnpike
Pompton Lakes, NJ 07442 USA
973-616-9060 fax: 973-616-9250

www.thehendrikgroup.com



Oven Take-Off Conveyor



Salter Reclaim w/Cross Dump



Oven Take-Off Conveyor
w/Short Base



Oil Drain Conveyor



Oven Take-Off Conveyor
Multi-Purpose



Oven-On Conveyor

Represented By:



The Hendrik Group

IMMACUTRAK™ FOOD GRADE CONVEYORS PARTIAL INSTALLATION LIST

Project	Conveyor Type	Size	Features
1524	Salter Reclaim		SS mesh belt Cross screw reclaim
1528	Salter Reclaim		SS mesh belt Cross screw reclaim
1538	Oven Take-off	45" x 72" L	8" retract. noser
	Oven Take-off	54" x 72" L	8" retract. noser
	Cross Dump	20" x 120" L	
	Cross Dump	20" x 120" L	
1543	Salter Reclaim	45" x 60" L	8" DIA Van der Graaf drive
	"C" Salter Support Frame		Cross belt reclaim
1546	Salter Reclaim	45" x 60" L	8" DIA Van der Graaf drive
	"C" Salter Support Frame		
1547	Salter Reclaim	42" x 42" L	Mesh belt
1555	Oven Take-off	66" x 72" L	8" retract. noser
1570	Transfer	66" x 72" L	
	Tumbler Replacement	24" x 11'0"L	
	Cross Oil Drain	24" x 19'6"L	Oil collection trays
	Reversible Fines	24" x 72"L	
1590	Cross Dump	14" x 11'7"L	2" side wall belt
	Cross Dump	14" x 11'7"L	2" side wall belt
1597	Cross Dump	14" x 11'7"L	2" side wall belt
1613	Oven Take-off	45" x 72"L	Retract. noser
	Oil Drain	45" x 120"L	Oil collecting trays
1633	Oven Pan On	45" x 11'5"L	12" Van der Graaf Articulating arm Rotating base
	Oven Take-off	45" x 72" L	
1644	Oven Pan On	45" x 109"L	Articulating arm Rotating base
1655	Oven Take-off	45" x 72" L	
	Oil Drain	45" x 86" L	
1666	Oven Take-off	52" x 46 ½" L	

Redefining the Standards of Bulk Handling!

193 Sprain Brook Road
Woodbury, CT 06798 USA
203-263-7025 Fax: 203-263-7425
Email: mail@HendrikEnt.com

Represented By:

227 Hamburg Turnpike
Pompton Lakes, N.J. 07442 USA
973-616-9060 Fax: 973-616-9250
Email: mail@HendrikEnt.com

Project	Conveyor Type	Size	Features
1671	(2) Oven Pan On	45" x 11'0" L	10" Vander Graaf drive Articulating arm Rotating base
1667	Ambient Cooling	46" x 45'0" L	
	Ambient Cooling	46" x 78'0" L	
	Ambient Cooling	46" x 105'9" L	
	Ambient Cooling	46" x 10'9" L	
	(2) 90 degree turn	48" belt	6'0" radius
1670	Ambient Cooling		
	90 degree turn	48" belt	6'0" radius
1779	Declined Ambient Cooling		
	Ambient Cooling		Inralox Belt
	Intralox belt washer		
1792	Oven Take-off	18" x 9'0" L	
1796	(2) 90 degree turn	48" belt	12'0" radius
	180 degree turn	48" belt	12'0" radius
	Oil Drain	48" x 15'0" L	
	Inclined Ambient Cooling	46" x 99'6" L	
	Horizontal Ambient Cooling	46: x 64'6" L	
	Declined Ambient Cooling	46" x 110'11" L	
	Horizontal Ambient Cooling	46" x 101'11" L	
1803	Twin Screw Feeders		Sugar handling
1805	Oven Take-off	52" x 47" L	
1806	(2) Bag Dump Stations		Flour handling
1819	Oven Take-off	58" x 72" L	
	Oil Drain	58" x 96" L	
	Decline Ambient Cooling	56" x 71'0" L	Removable catch pans
	Horizontal Ambient Cooling	56" x 111'9" L	Removable catch pans
	Horizontal Ambient Cooling	56" x 123'4" L	Removable catch pans
	(2) 180 degree turn	60" belt	13'6" radius
1837	Oven Take-off	18" x 9'0" L	Articulated Arm.
1850	180 Degree Turn	42" belt	69" radius
1869	Oven Take-off	18" x 9' 2 ½" L	Articulating ends
	(2) 90 degree turns	18" x 4'9" radius	Water cooled
	(2) 180 degree turns	18" x 4'9" radius	Water cooled

IMMACUTRAK
FOOD CONVEYOR
SYSTEMS

**Food Grade
Oven Take-Off
Conveyor**



The Hendrik Group, Inc.
193 Sprain Brook Rd., Woodbury, CT 06798
203-263-7025 * fax: 203-263-7425
email: support@thehendrikgroup.com

IMMACUTRAK
FOOD CONVEYOR
SYSTEMS

**Food Grade
Short Base
Oven Take-Off Conveyor**



The Hendrik Group, Inc.
193 Sprain Brook Rd., Woodbury, CT 06798
203-263-7025 * fax: 203-263-7425
email: support@thehendrikgroup.com

IMMACUTRAK
FOOD CONVEYOR
SYSTEMS

Food Grade
Oven Take-Off Conveyor
Multi-Purpose
Used in R & D



The Hendrik Group, Inc.
193 Sprain Brook Rd., Woodbury, CT 06798
203-263-7025 * fax: 203-263-7425
email: support@thehendrikgroup.com

IMMACUTRAK
FOOD CONVEYOR
SYSTEMS

Food Grade Oil Drain Conveyor



The Hendrik Group, Inc.
193 Sprain Brook Rd., Woodbury, CT 06798
203-263-7025 * fax: 203-263-7425
email: support@thehendrikgroup.com

IMMACUTRAK
FOOD CONVEYOR
SYSTEMS

Food Grade Oil Drain Conveyor



The Hendrik Group, Inc.
193 Sprain Brook Rd., Woodbury, CT 06798
203-263-7025 * fax: 203-263-7425
email: support@thehendrikgroup.com

IMMACUTRAK
FOOD CONVEYOR
SYSTEMS

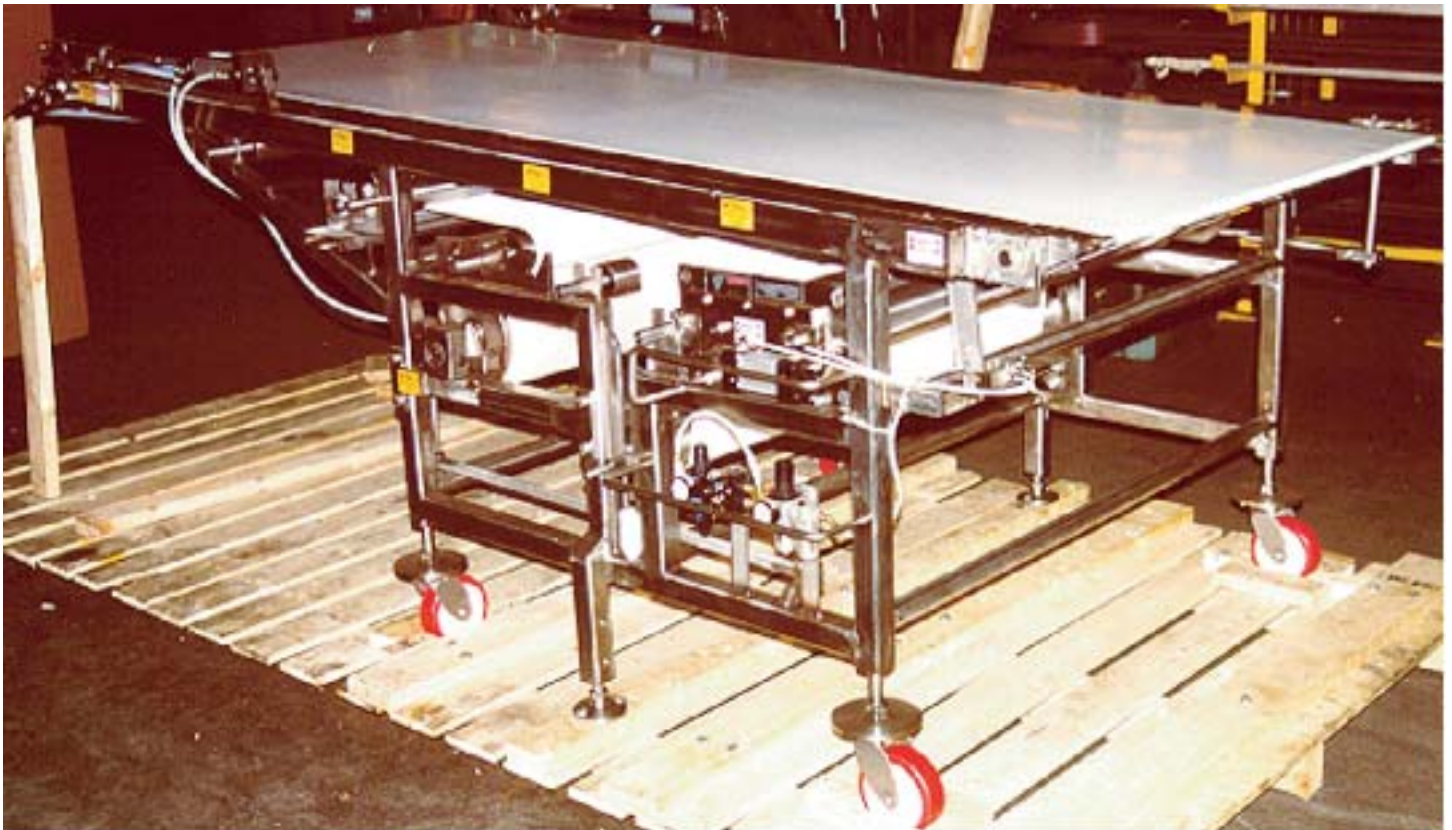
**Food Grade
Salt Recycling Conveyor
With Cross Dump**



The Hendrik Group, Inc.
193 Sprain Brook Rd., Woodbury, CT 06798
203-263-7025 * fax: 203-263-7425
email: support@thehendrikgroup.com

IMMACUTRAK FOOD CONVEYOR SYSTEMS

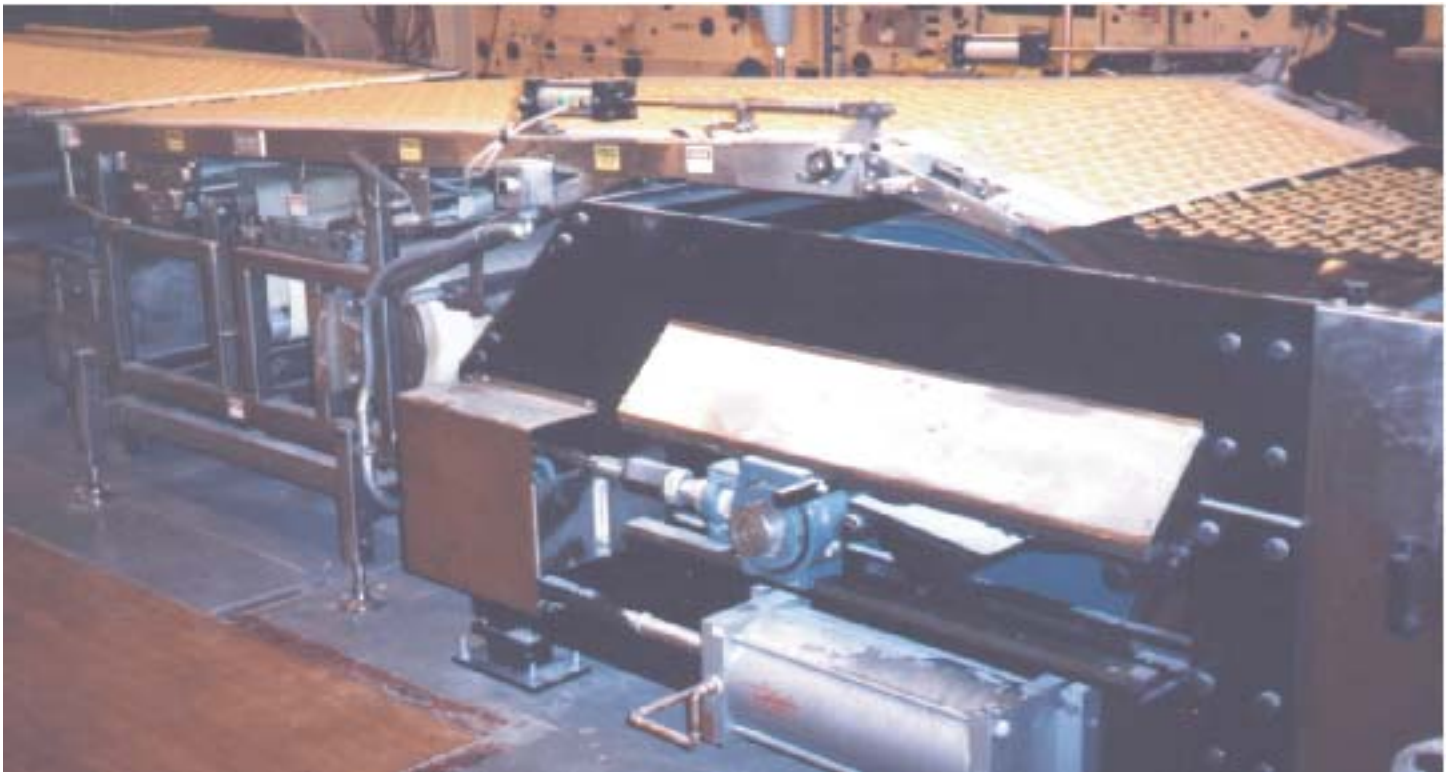
Food Grade Pan-On Conveyor



The Hendrik Group, Inc.
193 Sprain Brook Rd., Woodbury, CT 06798
203-263-7025 * fax: 203-263-7425
email: support@thehendrikgroup.com

IMMACUTRAK FOOD CONVEYOR SYSTEMS

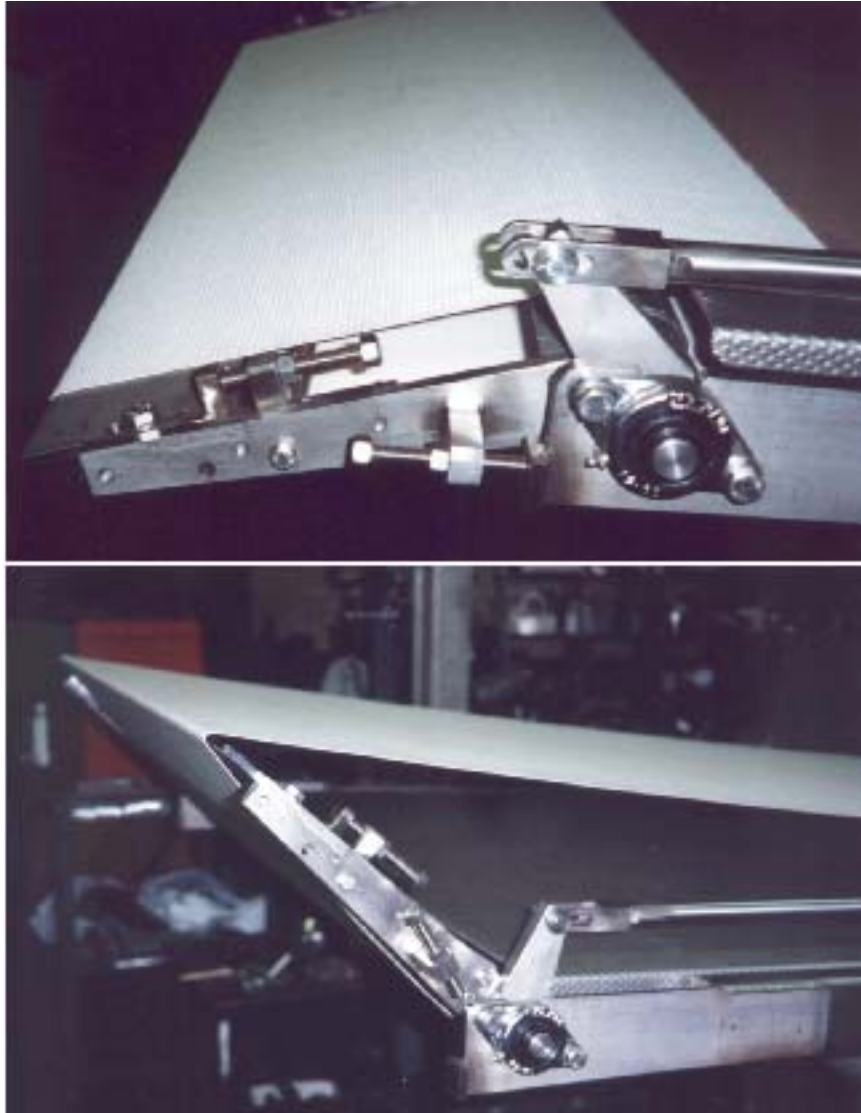
Food Grade Pan-On Conveyor In Action



The Hendrik Group, Inc.
193 Sprain Brook Rd., Woodbury, CT 06798
203-263-7025 * fax: 203-263-7425
email: support@thehendrikgroup.com



Food Grade Pan-On Conveyor Noser Details

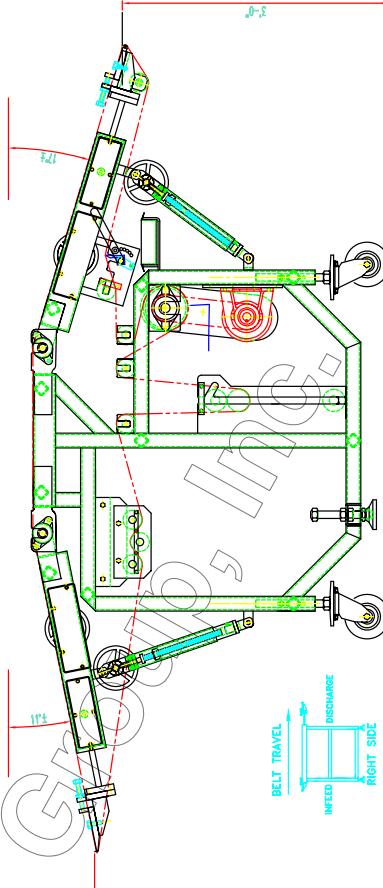
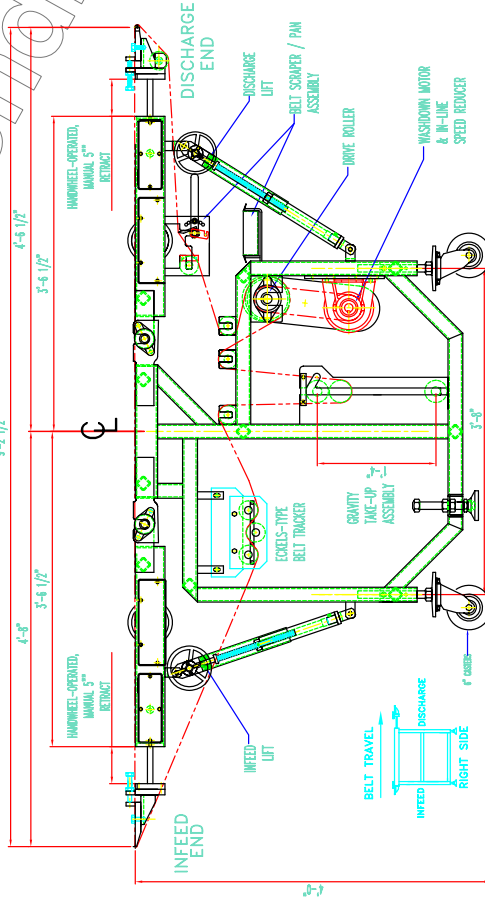
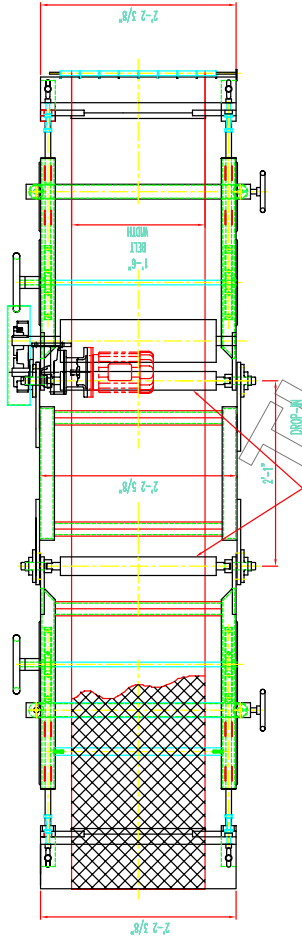


The Hendrik Group, Inc.
193 Sprain Brook Rd., Woodbury, CT 06798
203-263-7025 * fax: 203-263-7425
email: support@thehendrikgroup.com

IF IN DOUBT, PLEASE NEVER ASSUME. ALL QUESTIONS ARE GOOD QUESTIONS AND ANSWERS ARE CHEAP...REWORK IS NOT!

OVEN TAKE-OFF CONVEYOR SPECIFICATIONS

- 1 BELTING- HABASIT -#AVT-1615
- BELT WIDTH- TO SUIT
- BELT LENGTH- 233.5"
- 2 CONVEYOR HEIGHT- INFEED, RAISED 48"
- INFEED, LOWERED 42"
- DISCHARGE, RAISED 48"
- DISCHARGE, LOWERED 36"
- 3 CONVEYOR LENGTH (HORIZONTAL)- 110.5"
- 4 CONVEYOR POSITION- INFEED, HORIZONTAL TO 5° DECLINE, VARIABLE
- DISCHARGE, 5° DECLINE, VARIABLE
- 5 FRAME WIDTH- 26.625" INFEED, 29.75" DISCHARGE
- *6 DRIVE- BALDOR WASHDOWN MOTOR W/DM 3558; 2HP, 3 PHASE, 440V, 1725RPM, TEFC
- SUMITOMO SM-CYCLO SPEED REDUCER, CNHX-4105-DA-Y-2 89-1, 56C FACE MOUNTING
- TIMING BELT, 300H100, 1" WIDE, 1/2" PITCH
- TIMING BELT PULLEY, 22H100 TL
- 7 NOSEBARS- INFEED 25.625" X 3/4" DEAD NOSER 3/32" TIP RAD. ±1" MANUAL ADJUSTMENT
- DISCHARGE 29.75" X 3/4" LIVE NOSER #1/2" NYLON ROLLERS ±1" MANUAL ADJUSTMENT
- 8 BEND AND BELT TRACKER ROLLERS- #2-1/2" X 21" FACE 11Gg. S.S.
- SCALMASTER ER-16 BEARINGS #1" S.S. SHAFTING
- 9 GRAVITY TAKE-UP ROLLER- (WEIGHTED ASSEMBLY) #3-1/2" X 20-1/8" FACE POLISHED O.D.
- #2-1/2" SHAFTING W/ STUB ENDS SCALMASTER ER-18 BEARINGS 14" MAX. STROKE
- 10 DRIVE ROLLER- #5" WITH 50 DURO FDA TAN LAGGING, CROWNED
- 11 INFEED-23 #1-1/4" NICKEL-PLATED 2" BOLT FLANGE BEARINGS #1-1/4" SHAFTINGS
- 2" BOLT FLANGE BEARINGS #1-1/4" SHAFTINGS MOUNTED WITHIN TUBING
- THOMPSON #3/4" S.S. SHAFTING & SPB-02 LINEAR BEARINGS MOUNTED WITHIN TUBING
- 12 DISCHARGE RETRACTION (5") - BACK & PINION GEAR SYSTEM MOUNTED WITHIN TUBE W/EXTENSION POSITION LOCK
- THOMPSON #3/4" S.S. SHAFTING & SPB-12 LINEAR BEARINGS, MOUNTED WITHIN TUBING
- 13 BELT TRACKER- 3-ROLL PNEUMATIC ACTUATED, ECKELS-TYPE
- 14 INFEED LIFT MECHANISM- MANUAL HANDWHEEL OPERATION -INFEED POSITION FROM HORIZONTAL TO -6"
- BOSTON HLSK102Y SPIRAL MITER GEARS (2 PAIR)
- 15 TORRINGTON NTA-1220 THRUST NEEDLE BEARING ASSEMBLIES -INFEED POSITION FROM HORIZONTAL TO -12"
- BOSTON HLSK102Y SPIRAL MITER GEARS (2 PAIR) ASSEMBLIES
- 16 BELT SCRAPER- HEI DESIGN, 7-POSITION ADJUSTABLE UHMW RADE, U.S. SHAFTING
- 17 CASTERS- SINGLE BALL SWIVEL, 304 S.S., 6"Ø POLYURETHANE WHEELS
- 18 LEVELING FEET- S&W MANUFACTURING STS-5, #4" S.S.



DRAWING APPROVED

THE HENDRIK GROUP		THE OVEN TAKE-OFF CONVEYOR 12/00	
SIGNATURES	DATE	Project	
Drawn	JM		
Approved			
Checked	HH/RS	Drawn	NTS
Scale	1/4" = 1'-0"	Sheet No.	101
		Project No.	1869-101
		Rev.	0

FOR ATTENTION: APPROVED ONLY - NOT TO BE USED FOR CONSTRUCTION UNLESS COUNTER SIGNED BY THE PROJECT ENGINEER. THIS DRAWING IS THE PROPERTY OF THE HENDRIK GROUP. IT IS TO BE KEPT IN CONFIDENCE.

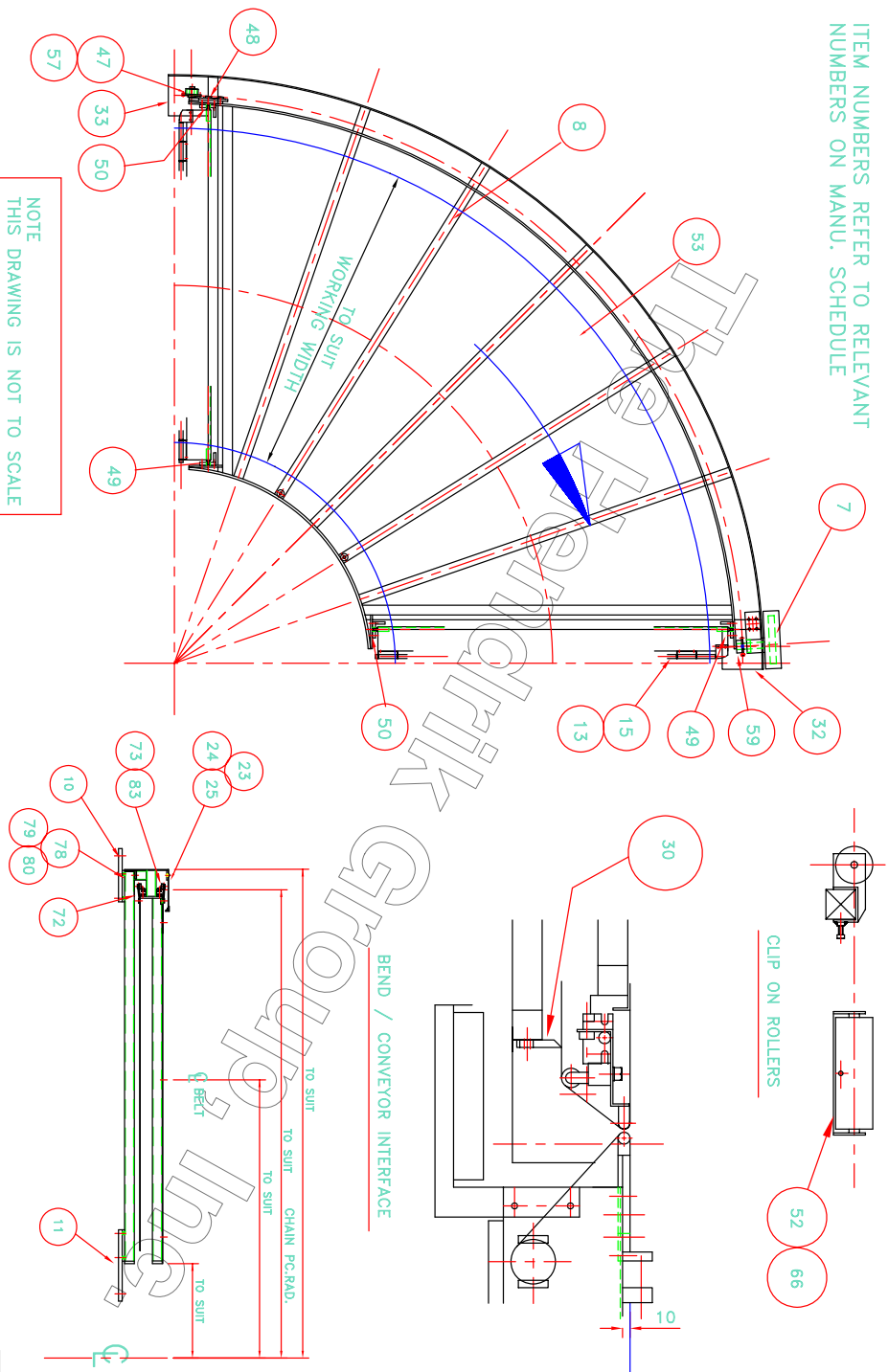
REV.	DATE	BY	DESCRIPTION
A			
B			
C			
D			



* = THIS MAY CHANGE, SLIGHTLY, DUE TO UPDATED BELT SPEED

IF IN DOUBT, PLEASE NEVER ASSUME. ALL QUESTIONS ARE GOOD QUESTIONS AND ANSWERS ARE CHEAP...REWORK IS NOT!

ITEM NUMBERS REFER TO RELEVANT NUMBERS ON MANU. SCHEDULE



90° BELT BEND CONVEYOR



THE HENDRIK GROUP	
SIGNATURES DATE DRAWN CHECKED ENGINEER SCALE	TITLE PROJECT DRAWING NO. SCALE
REV. A REV. B REV. C REV. D REV. E	DATE BY DESCRIPTION DATE BY DESCRIPTION

